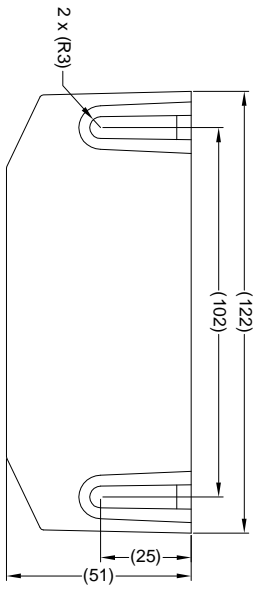


Revision Notes			
R1	INTERCOM CABLE SPECIFICATION REVISED. COMMON GROUND BLACK TO GREEN. (016156)		
APA: A	HEEDLE 24/11/14	Drawn/A MINSHULL	Checked/M BUTLER
		Approved/GUSTAF BUTH	Date: 25/11/14



VIEW A

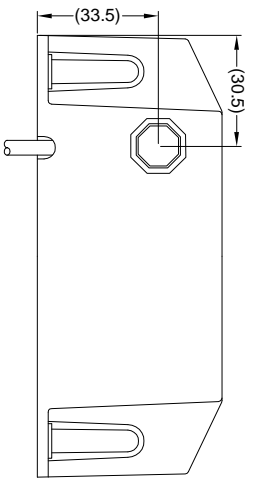
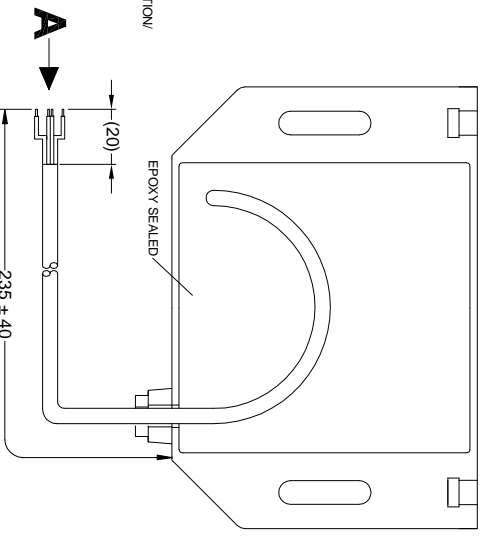
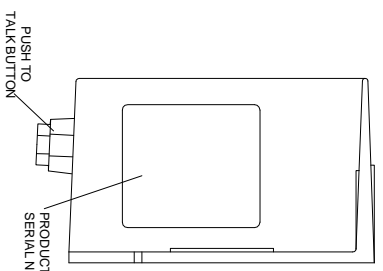
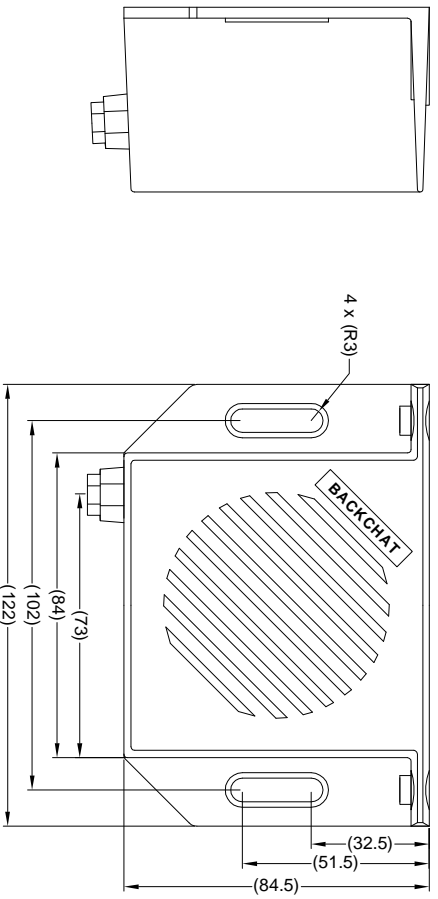
PN #	WIRE COLOUR	DESCRIPTION
NA	GREEN	COMMON GND
NA	YELLOW	SPEAKER SIGNAL
NA	RED	SWITCH SUPPLY
NA	BLUE	SPEAKER SIGNAL

CHANGES FROM BASE PRODUCT BC-VI-2 SLAVE (#0991) TO BC-VI-2(030) SLAVE (#2993)

CHANGE:

1. INTERCOM CABLE SHORTENED TO 235MM ± 40.
2. INTERCOM CONNECTOR REMOVED.
3. PUSH TO TALK BUTTON IS REPLACED WITH NON WATERPROOF BUTTON.
4. ALL PACKAGING & FIXING KITS TO BE REMOVED.

OPERATION: SAME AS BASE PRODUCT.



OPERATION

SPECIFICATION

SLAVE UNIT HAS NO ACTIVE COMPONENTS. SPEAKER / MICROPHONE ONLY.
SOUND PRESSURE: MAX 90dB DE CIBEL S AT TEST VOLTAGE OF 14 AND 28 VOLTS.
CABLE THICKNESS: INTERCOM CABLE 4 INSULATED CORE 7/0.22MM CABLE IN PVC SHEATHING.
INTERCOM CABLE INSULATION MUST BE FULLY POTTED AT POINT OF CONNECTION TO PCB.

OPERATION

SLAVE IS DALE UNLESS THE SLAVE PUSH TO TALK BUTTON IS PRESSED UPON WHICH THE SLAVE WILL TRANSMIT TO THE MASTER.
WHILST IDLE THE SLAVE CAN RECEIVE FROM THE MASTER WHEN THE MASTER PUSH TO TALK BUTTON IS PUSHED.
IF THE SLAVE & MASTER TRY TO TRANSMIT SIMULTANEOUSLY NEITHER UNIT WILL BE ABLE TO TRANSMIT OR RECEIVE.

- NOTES:
1. MATERIAL: ABS PLASTIC - ULTRA VIOLET STABILIZED.
 2. FINISH: BLACK.
 3. FOR PRODUCT LABEL REFER TO LATEST REVISION OF DRAWING BE-002749-XX-13.
 4. INTERCOM CABLE LENGTH IS MEASURED FROM CABLE ENTRY POINT ON HOUSING.
 5. BC-VI-2 (030) SLAVE TO BE PAIRED WITH BC-VI-2(030) MASTER.

PROPRIETARY NOTICE

THIS DESIGN AND TECHNICAL INFORMATION APPEARING ON THIS DRAWING IS THE PROPERTY OF BRIGADE ELECTRONICS, AND IS DISCLOSED IN CONFIDENCE. IT IS NOT TO BE COPIED, REPRODUCED, REVEALED TO OR EXPROPRIATED BY OTHERS EITHER IN WHOLE OR IN PART WITHOUT THE EXPRESS WRITTEN CONSENT OF BRIGADE ELECTRONICS.

BRIGADE
www.brigade-electronics.com

<p>Angle of Projection</p> <p>Third Angle</p>	Assembly Pl Approval A. HEEDLE		Approved by D. KERAI	Checked by J. NEWMAN	Drawn by M. BUTLER
	Status RELEASED	Units mm	Scale N/A	Released 13/10/11	Assembly Ref A1104_OEM
				BC-VI-2 (030) SLAVE	
				BE-001797-01-11	

